



PANEL-LAM[®] SKIDDER MATS



Wheeler Panel-Lam[®] Skidder Mats are sized for easy handling with a standard pulp-wood loader for transportation to and from the logging site. Steel eyes welded on both end plates make convenient attachment points for loading and unloading of the panels and for dragging to the crossing site. Attention to detail ensures quality.



Panel-Lam[®] Skidder Mats provide a convenient and low cost method of crossing small streams or wetlands with a skidder or truck without creating unnecessary environmental damage from blockage or silting of the stream. The use of Panel-Lam[®] Skidder Mats will help insure that BMP's are observed.



Using the skidder blade, Panel-Lam[®] Skidder Mats are easily installed on a mud sill. For heavier duty application, they may be installed using a timber or log sill. The steel end plates protect the mat when the mats must be dragged by the skidder to the crossing. The mats may be attached to each other or end to end for use in crossing wetland areas.

Wheeler

Width - 5' Length - 12'-36'

BUILT FOR RUGGED USE

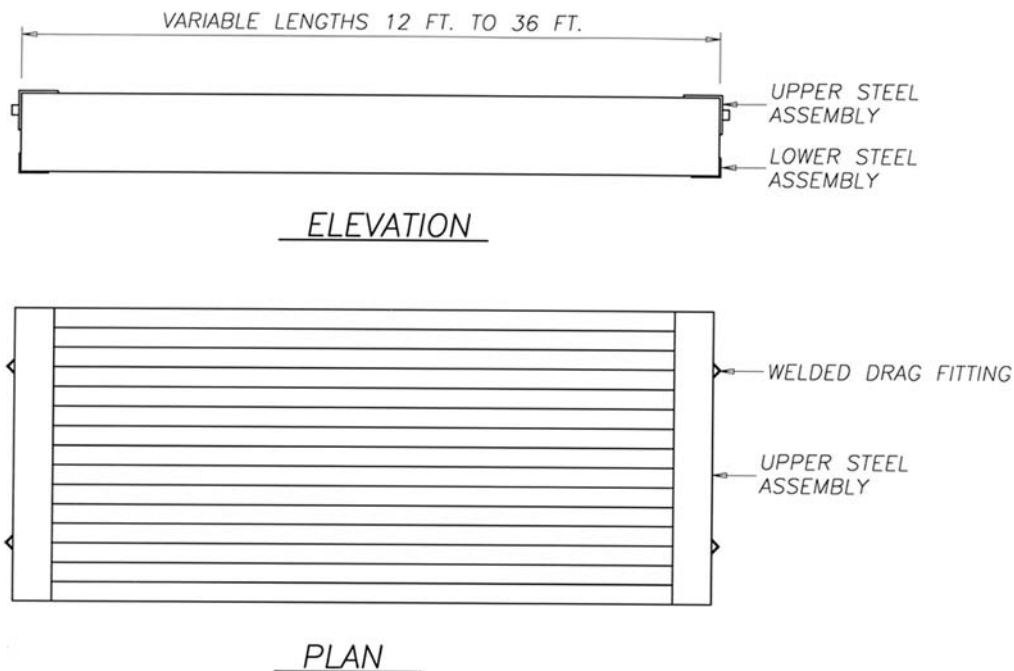
Wheeler Lumber has over 50 years of experience fabricating Panel-Lam[®] timber bridges. We have turned our expertise to skidding operations. The rugged Panel-Lam[®] skidder mat is designed by our engineers expressly for use at the logging site.

Glued-laminated panels provide only an envelope of treatment on the exterior of a panel and may delaminate at the glue joints. Wheeler Panel-Lam[®] components are all individually pressure treated prior to machine laminating with steel dowels in Wheeler's exclusive process. Wheeler Panel-Lam[®] skidder mats are made tough for repeated use in skidder operations.

LOAD CAPACITY

Engineered for skidders, or a wide variety of wheel loads. All timber is treated with oil-borne preservatives to AWPA specifications and is treated before fabrication to ensure maximum durability. All metal dowels are machine pressed to insure proper load distribution.

FAILURE TO MACHINE PRESS DOWELS COULD RESULT IN FAILURE OF THE PANELS.
FAILURE TO TREAT WITH A PROPER WOOD PRESERVATIVE WILL RESULT IN LESS DURABILITY AND GREATER FRICTION OVER THE DECK.



Wheeler Lumber, LLC

9330 James Avenue South Bloomington, MN 55431

Ph: (952)929-7854 or (800)328-3986 Fx: (952)929-2909 Email: info@wheeler-con.com Web: www.wheeler-con.com